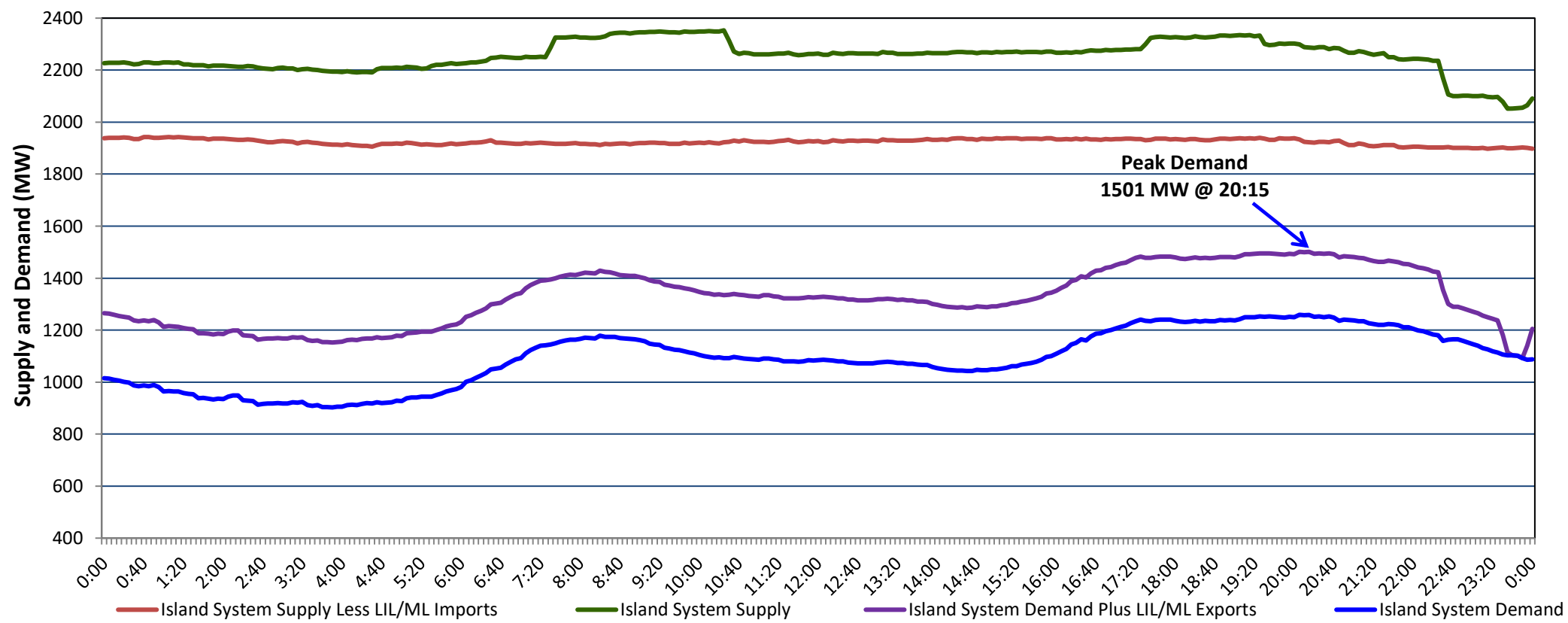


## Newfoundland Labrador Hydro (NLH) Supply and Demand Status Report Filed Thursday, January 26, 2023

### Section 1 Island Interconnected System Supply, Demand & Exports Actual 24 Hour System Performance For Wednesday, January 25, 2023



#### Supply Notes For January 25, 2023

1,2

A As of 0631 hours, January 19, 2023, Holyrood Unit 3 available but not operating (150 MW).

### Section 2 Island Interconnected Supply and Demand

| Thu, Jan 26, 2023                            | Island System Outlook <sup>3</sup> | Seven-Day Forecast          | Temperature (°C) |         | Island System Daily Peak Demand (MW) |                       |
|--|------------------------------------|-----------------------------|------------------|---------|--------------------------------------|-----------------------|
|  |                                    |                             | Morning          | Evening | Forecast                             | Adjusted <sup>7</sup> |
| Available Island System Supply: <sup>5</sup> | 2,325 MW                           | Thursday, January 26, 2023  | -8               | 0       | 1,700                                | 1,600                 |
| NLH Island Generation: <sup>4,8</sup>        | 1,545 MW                           | Friday, January 27, 2023    | 7                | 1       | 1,255                                | 1,160                 |
| NLH Island Power Purchases: <sup>6</sup>     | 115 MW                             | Saturday, January 28, 2023  | -5               | -4      | 1,360                                | 1,264                 |
| Other Island Generation:                     | 230 MW                             | Sunday, January 29, 2023    | -5               | -1      | 1,360                                | 1,264                 |
| ML/LIL Imports:                              | 435 MW                             | Monday, January 30, 2023    | 0                | 2       | 1,385                                | 1,289                 |
| Current St. John's Temperature & Windchill:  | -6 °C                              | Tuesday, January 31, 2023   | -1               | -2      | 1,365                                | 1,269                 |
| 7-Day Island Peak Demand Forecast:           | 1,700 MW                           | Wednesday, February 1, 2023 | -10              | -7      | 1,530                                | 1,432                 |

#### Supply Notes For January 26, 2023

3

- Notes:
1. Generation outages for running and corrective maintenance are included. These are not unusual for power system operations. They generally do not impact customer supply. The power system operators schedule outages to system equipment whenever possible to coincide with periods when customer demands are low and sufficient supply reserves are available. However, from time to time equipment outages are necessary and reserves may be impacted.
  2. Due to the Island system having no synchronous connections to the larger North American grid, when there is a sudden loss of large generating units there may be a requirement for some customer's load to be interrupted for short periods to bring generation output equal to customer demand. This automatic action of power system protection, referred to as under frequency load shedding (UFLS), is necessary to ensure the integrity and reliability of system equipment. Under frequency events have typically occurred 5 to 8 times per year on the Island Interconnected System and the resultant customer load interruptions are generally less than 30 minutes. With the activation of the Maritime Link frequency controller during the winter of 2018, UFLS events have occurred less frequently.
  3. As of 0800 Hours.
  4. Gross output including station service at Holyrood (24.5 MW) and improved NLH hydraulic output due to water levels (35 MW).
  5. Gross output from all Island sources (including Note 4).
  6. NLH Island Power Purchases include: CBPP Co-Gen, Nalcor Exploits, Rattle Brook, Star Lake, Wind Generation and capacity assistance (when applicable).
  7. Adjusted for curtailable load, market activities and the impact of voltage reduction when applicable.
  8. Due to limitations inherent in the design of combustion turbines, the output of combustion turbines may be reduced in the event that ambient temperatures exceed the threshold

### Section 3 Island Peak Demand Information Previous Day Actual Peak and Current Day Forecast Peak

|                   |  |       |          |
|-------------------|--|-------|----------|
| Wed, Jan 25, 2023 | Actual Island Peak Demand <sup>9</sup> | 20:15 | 1,501 MW |
| Thu, Jan 26, 2023 | Forecast Island Peak Demand            |       | 1,700 MW |

Notes: 9. Island Demand / LIL / ML Exports (where applicable) is supplied by NLH generation and purchases, plus generation owned and operated by Newfoundland Power and Corner Brook Pulp & Paper (Deer Lake Power, DLP).